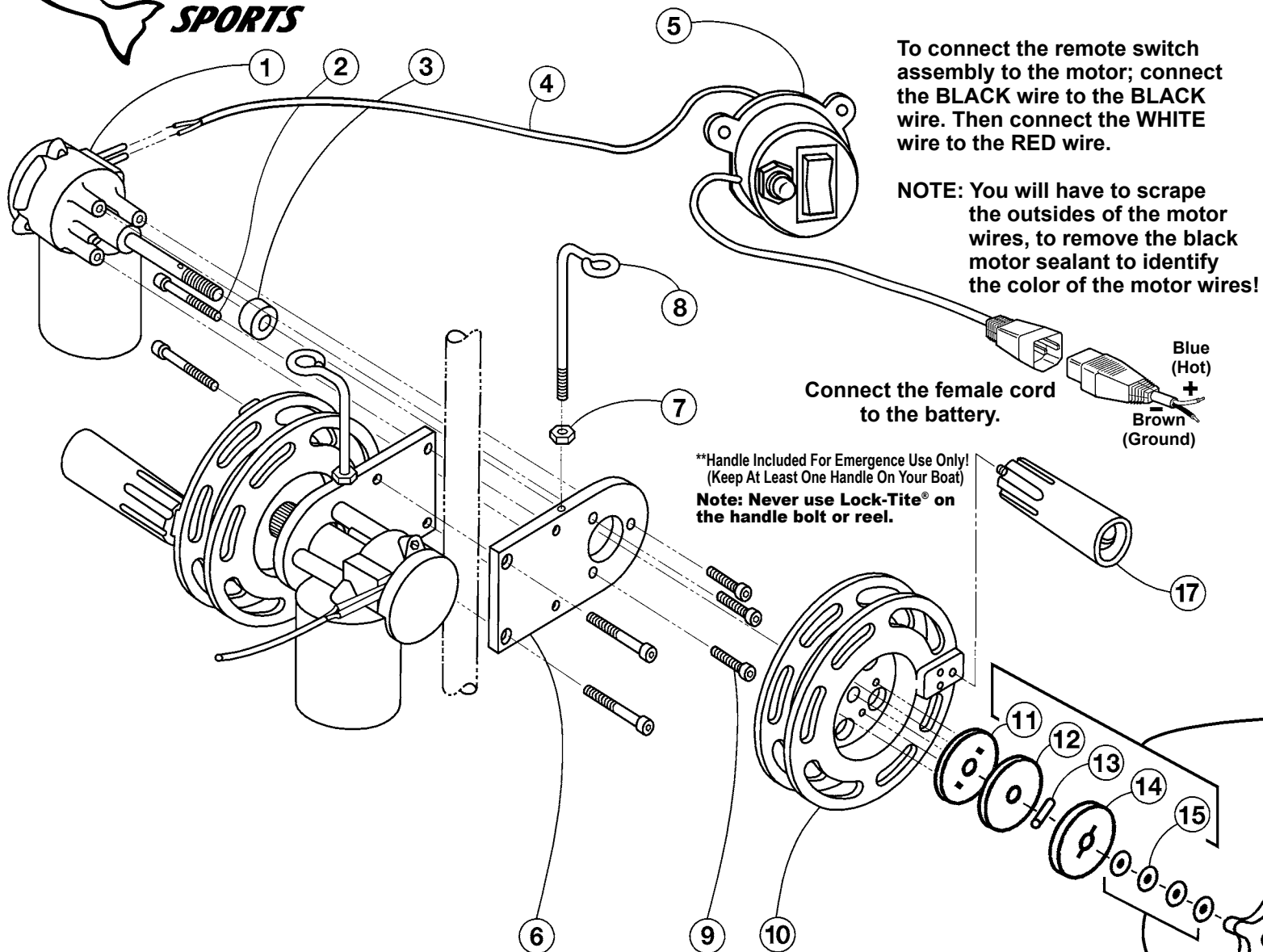




Dual Electric Planer Reel



To connect the remote switch assembly to the motor; connect the BLACK wire to the BLACK wire. Then connect the WHITE wire to the RED wire.

NOTE: You will have to scrape the outsides of the motor wires, to remove the black motor sealant to identify the color of the motor wires!

Connect the female cord to the battery.

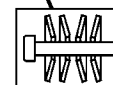
Blue
(Hot)
+
Brown
(Ground)

****Handle Included For Emergence Use Only!
(Keep At Least One Handle On Your Boat)
Note: Never use Lock-Tite® on
the handle bolt or reel.**

Parts List PM00002

Detail No.	Description	Qty.	Order By Part No.
1	Motor Assembly	2	KT2205C
2	1/4-20 x 2-1/4 in. SH Cap Screws	4	2145
3	Hardened Spacer	2	51059
4	20 ft. Power Cord	2	2550
5	Remote Switch Assembly	2	KT51145ASM2
6	Reel Clamp Plate	2	53000
7	1/4-20 SS Hex Nuts	2	2133
8	Guide / Eye	2	2500
9	1/4-28 x 1 in. SH Screws	6	2007
10	6 in. Reel	2	KT51174B
11	Inner Clutch Disks	2	KT51098
12	Graphite Pads	2	KT2308
13	Shaft Dowel Pins	2	2163
14	Outer Clutch Disks	2	KT51094
15	Belleville Washers	2	KT2232
16	Jr. Clutch Knob	8	KT51153
17	Handle Assembly	2	KTHA101

NOTICE:
**This Improved Clutch System
Replaces All Clutch Systems
(With Disk And Clutch Plugs)
Built Before April, 2013**



Correct Arrangement
Of Belleville Washers